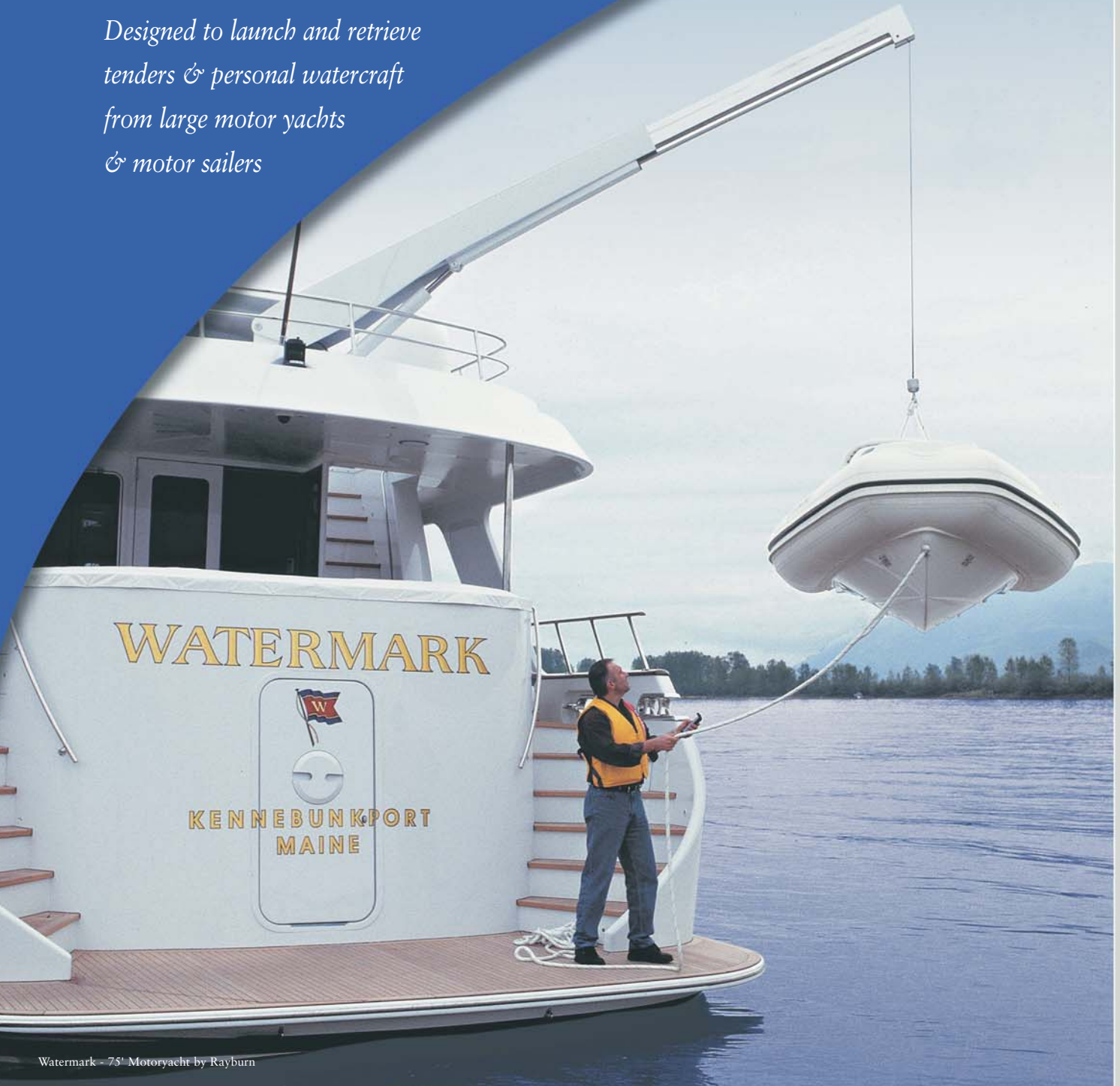




# YACHT CRANES

*Designed to launch and retrieve  
tenders & personal watercraft  
from large motor yachts  
& motor sailers*

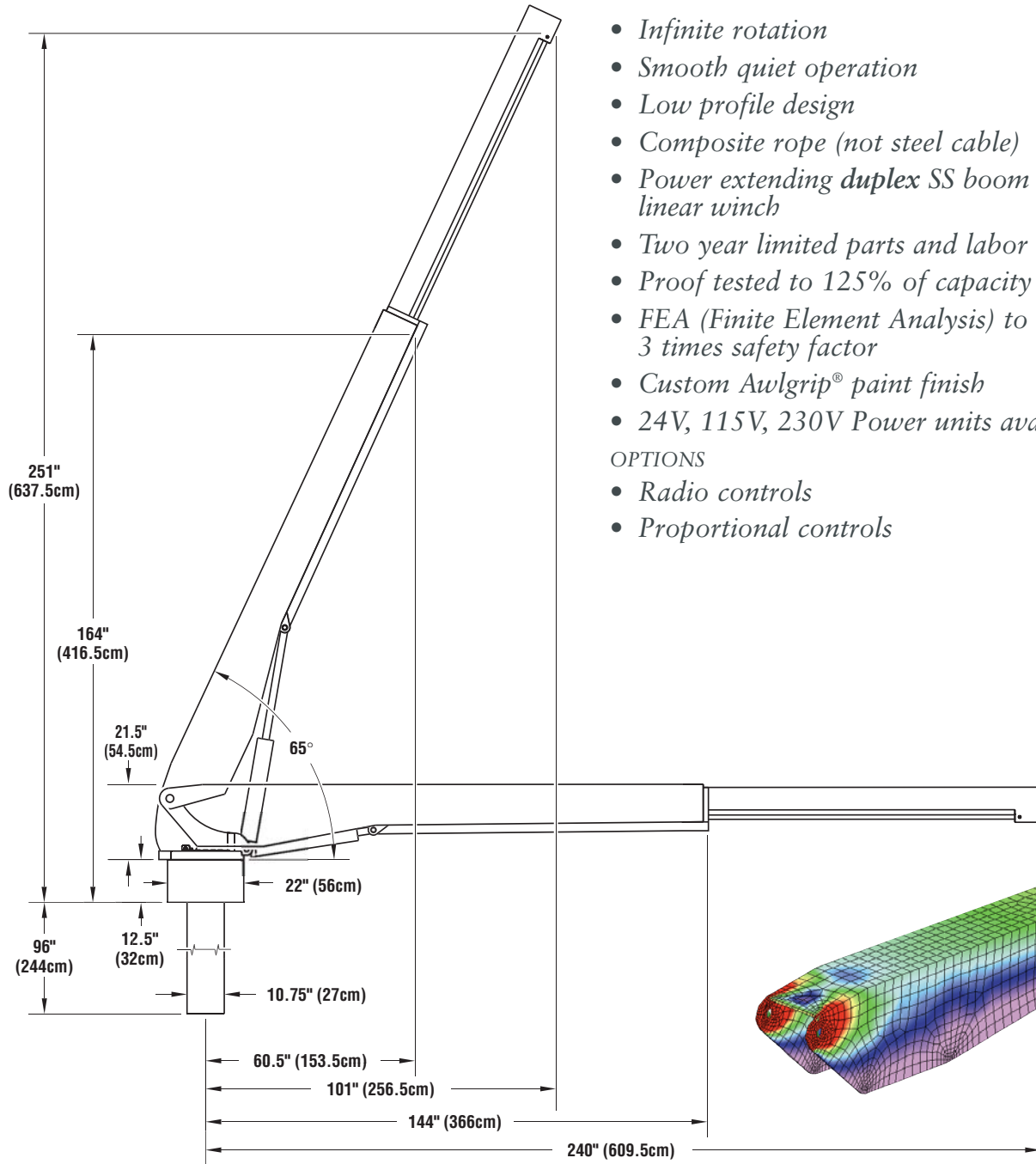


Watermark - 75' Motoryacht by Rayburn



70,000 ft-lb CT 3500

# 70,000 ft-lb CT 3500



- Infinite rotation
  - Smooth quiet operation
  - Low profile design
  - Composite rope (not steel cable)
  - Power extending **duplex SS boom with internal linear winch**
  - Two year limited parts and labor warranty
  - Proof tested to 125% of capacity
  - FEA (Finite Element Analysis) to 3 times safety factor
  - Custom Awlgrip® paint finish
  - 24V, 115V, 230V Power units available
- OPTIONS
- Radio controls
  - Proportional controls

	CAPACITY	REACH	SAFETY FACTOR	WEIGHT	HOIST CABLE	CABLE SF	HOIST HEIGHT	WINCH TYPE	FOUR FUNCTION HYDRAULICS
CT 3500	3500 lbs (1587 Kg)	20' (610cm)	3:1	1280 lbs (580 Kg)	1/2" Amsteel Blue	9.3:1	24' (731.5 cm)	Linear	Power Luffing, Extension, Rotation, Winch



Steelhead Marine Ltd.  
 7057 Beatty Drive, Mission, BC, Canada V2V 6C4  
 Tel: 604.826.1668 Fax: 604.826.9992  
 E-mail: steelheadmarine@telus.net  
 Web: www.steelheadmarine.net  
 © 2002 Steelhead Marine Ltd. Printed in Canada

Dealer/Distributor